



NATIONAL STRATEGY  
**REDD - INDONESIA**  
READINESS PHASE 2009 – 2012  
and progress in implementation

Jakarta, February 2010



**UN – REDD  
PROGRAMME**



**Australian Government  
AusAID**



**The Nature  
Conservancy**   
Protecting nature. Preserving life.™



# Foreword

## Contents

Foreword .....	3
Introduction .....	4
Forest Policy and Management.....	5
Deforestation and Forest Degradation in Indonesia.....	6
Regulatory Framework to Tackle Deforestation and Forest Degradation in Indonesia .....	8
REDD in Indonesia .....	10
Key Category and Components of REDD-Indonesia Strategy in Readiness Phase.....	13
Readiness Progress .....	14

### Resource Persons:

Director General of Forestry Research and Development Agency, Senior Adviser to the Minister of Forestry/Chairman of Climate Change Working Group of the Ministry of Forestry

**Lead Author:** Dr. Nur Masripatin

**Authors:** Dr. Ruffi'e, Dr. Kirsianti Ginoga, Dr. Ngaloken Gintings, Dr. Chairil Anwar Siregar, Dr. Ruandha Sugardiman, Ir. Ari Wibowo, M.Sc, I. Wayan Susi Darmawan, S.Hut., M.Si., Ir. Saipul Rahman, M.Sc., Ir. Retno Maryani, M.Sc, Ir. Achmad Pribadi, M.Sc, Fitri Nurfatriani, S.Hut., M.Si., Dyah Puspasari, S.Hut, M.Si., Reinaldi Imamnudin, S. Hut, Sukaesih Pradjadinata, S.Hut

**Secretariat:** Dra. Sumiyati, Duhita Herlyn Lusiya S.Hut, Ir. Tigor Butar-Butar MSc, Ir. Indarwati, Bayu Subekti, SIP, MHum

**Design:** Bintoro, S.Kom

Conceptually, the role of forest in climate change mitigation is simple, through reducing emission and enhancing sink capacity. However, operationalization of this concept demand for knowledge on methodological to social, economy, and national policy aspects. There have been consensus between countries on the necessity of a phase-based approach in REDD-plus implementation of which can start from readiness phase to full implementation.

In order to strengthen the readiness for full implementation post 2012, Indonesia has prepared REDD strategy for the 2009-2012 Readiness Phase. This strategy is aimed at providing guidance relating to policy intervention to address drivers of deforestation and forest degradation, and providing infrastructures necessary for the implementation of REDD/ REDD-plus. This strategy also integrates all actions relevant to REDD-plus including activity funded from the foreign resources.

This book is presented as one of the media to enhance dissemination of information on the Readiness Strategy of REDD-Indonesia and the progress of the implementation including the development of Demonstration Activities, which is expected to contribute to the strengthening of knowledge, understanding, and collaborative actions relating to reducing emissions from deforestation and forest degradation in Indonesia.

Jakarta, February 2010

Minister of Forestry

ZULKIFLI HASAN



# Forest Policy and Management

Law (UU) No. 41 of 1999 concerning Forestry and Law No.5 of 1990 concerning Conservation of Biological diversity and the Ecosystem serve as the legal grounds and reference in conserving natural resources and managing forest in Indonesia in a sustainable manner.

The law No. 41/1999 mandated that forest be regulated by the state taking into account the rights of indigenous people, to the extent that they still exist and it does not conflict with national interest. The management of the state forest area in Indonesia which makes up to 60% of the total country land area, is under the authority of the Ministry of Forestry.

The increasing need for land as the result of increasing population, decentralization, economic growth and the interest of development of other sectors such as agriculture, plantation, housing, public works, has put pressure on forest resources and the forest area.

The abovementioned condition often conflicts with the efforts to mitigate climate changes through emission reduction from deforestation and forest degradation (REDD). Therefore, coordination, communication and synergy in various aspects related to development activity and mitigation of climate changes in the forestry sector at the national and sub national levels (province and district) need to be done continuously.

Other matters which should be highlighted is the demand for better management of forest at the local level by involving local people around the forest and giving greater access to forest resources to the people.

Policies concerning community forest, village forest, private forest, small holding timber plantation, social forestry, which have been issued and implemented show that Indonesia has strong commitment to accommodate different interests related to forestry development.

## Introduction

As a country with the third largest tropical forest in the world, the forestry sector does not only contribute in the national development, it also plays significant role in maintaining ecosystem balance, including in stabilizing global emission.

On one side, timber is one of the prominent forest products which supports the national economy growth, likewise the conversion of forest area into agriculture and estate crops. On another side, forest clearing and forest conversion results in greenhouse gas emission which may trigger the global warming. In order to maintain the role and function of the forest and to mitigate the impact of climate changes, conservation and rehabilitation of forest area have to be done.

# Deforestation and Forest Degradation in Indonesia

Decision 11/CP.7 UNFCCC defines deforestation as direct result of human activity in converting forested area into a non-forested area. Degradation reflects the reduction in carbon stock of which can be measured and sustainable as a result of human activity which leave the forest coverage above minimum limit required in the definition of forest.

Indonesia is a sample of a case in which deforestation occurs in a contemplated (planned) or non-contemplated (unplanned) manner. Convertible forest area and Other Designation Area (APL) which may be converted into other land uses are categorized as planned deforestation. The development of palm oil plantation in the past may be categorized as planned deforestation/loss of forest area. The unplanned loss of forest area can be as a result of forest fire, encroachment of forest area, illegal logging and harvesting which does not comply with principle of sustainability.

The unplanned loss of forest which occurred during the 1990s was also resulting from imbalance demand of timber industries for raw material and supply capacity of natural forests.

The decrease in timber supply from natural forest encourage the Government policy to enhance development of Industrial Timber plantation (HTI). Some timber industries particularly paper and pulp industry develop plantation forest with fast growing species in order to ensure supply of raw material from the sources. However the development of timber plantation has not been able to reduce pressure on natural forest.



# Regulatory Framework to Tackle Deforestation and Forest Degradation in Indonesia

In order to cope with challenge in the forestry sector for the past ten years and to anticipate potential problem in the period of the next five years, the forestry sector has set and implemented five prioritized policies sin the 2000, namely:

1. Curbing illegal logging and its associated trading;
2. Restructuring of the forestry sector through enhancement of timber plantation development and forest industry;
3. Land rehabilitation and forest conservation;
4. Empowerment of people in/surrounding forest;
5. Strengthening forest boundaries to secure forest areas,

These five prioritized policies were further elaborated into short, medium, and long term forestry planning.

Starting from the end of 2009, the five prioritized policies has been amended into eight prioritized policies which address the problems encountered and future challenges. The eight prioritized policies are as follows:

1. Strengthening forest boundaries to secure forest areas,
2. Rehabilitation of degraded forest and improving carrying capacity of watershed,
3. Forest Protection and Fire management,
4. Conservation of biological diversity,
5. Revitalization of forest utilization and forest industries,
6. Empowerment of indigenou peoples and local communities
7. Mitigation of and adaptation to climate change,
8. Strengthening Forest Institutions.

Law No. 41 of 1999 concerning Forestry, Law No. 26 of 2007 concerning Area Planning, Government Regulation (PP) No. 6 of 2007 and the amendment in PP No. 3 of 2008, has provided strong legal framework and grounds in mitigating the impact of climate changes by reducing the greenhouse gas emission from deforestation and forest degradation which involves the provision of access and management of forest resources to people around the forest.

In line with the implementation of five prioritized policies on forestry, since 2000, Indonesia has intensively implemented a program to curb illegal logging through the development Forest Law Enforcement National Strategy (FLENS). The President's Instruction (INPRES) no 4/2005 concerning Illegal Logging, instructs 18 government institutions to work collectively in curbing illegal logging.

With the growing awareness on the multi sector approach in order to improve the management and governance, the government has declared war against the corruption in all sectors as its main priority. It is reflected in the works of independent agency known as Corruption Eradication Commission (KPK) and Anti Corruption High Court (PTAK) which has successfully encouraged the issuance of Law No 25 of 2003 concerning Money Laundering. This law is the first law in the world which allows the product of illegal logging to be used as evidence for investigation and for evidence in the court. The effort to eradicate corruption has shown the result as indicated by the trial of illegal activities in various sectors, including those in the forestry sector.

As a part of the effort to handle the drivers of unplanned deforestation, The Ministry of Forestry has issued various regulations which allows four opportunities of access improvement and rights on forest resources. The said regulations include Protection Forest Collaborative Management (Regulation of Minister of Forestry No 19 of 2004), Community Forest, Small holding timber plantation, and Indigenous Forest (PP No. 6 of 2007).

# REDD in Indonesia

Deforestation became one of dominant topics in many forest-climate related forum especially after Stern Report on the Economic of Climate Change published and Stern's campaign to all stakeholders in many countries including to policy makers. He emphasized on deforestation in developing countries that may contribute significantly to the global GHGs emissions and will continue to increase unless there is appropriate policy intervention. Based on WRI data (in Stern, 2006), deforestation contribute approximately 18 percent to the global GHGs and 75 percent of the emissions came from developing countries. Stern in his report and campaign called for immediate actions to reduce emissions from this sector and stressed out the importance of participation of international communities to help developing countries in reducing deforestation.

Deforestation issue came under the Agenda 'Reducing Emissions from Deforestation in Developing Countries (RED)' during 11th session of the UNFCCC Conference of the Parties (COP-11) in Montreal 2005 and has been responded positively by most parties. In various forums including COPs/SBs, most parties views that RED scheme should allow participation of all countries. The biggest challenge is how different national circumstances be accommodated in a fair and equitable manner considering the way forestry issues be addressed under climate convention.

As a part of the response to the international process and in order to prepare the negotiation in COP-13, Indonesia has performed a quick study/analysis concerning its preparedness, in terms of methodology and policy, and formed Indonesia Forest Climate Alliance (IFCA) in July 2007. IFCA is a hub or forum to communicate with/ coordinate the stakeholders in discussing the REDD issues, including the progress and output of the REDD study on that year. The REDD study in Indonesia in 2007 which was coordinated by the Ministry of Forestry involved experts from the national and international levels and was funded by the World Bank, Government of England, Australia and Germany. The progress and result of the study is communicated through IFCA by involving three pillars of governance (government, private sector, civil society including academicians) and international partners. A report entitled IFCA Consolidation Report: REDD in Indonesia (Dephut, 2008) may be accessed via the website [www.forda-mof.org](http://www.forda-mof.org).

IFCA studies 2007 recommended follow up works, namely :

1. Build on initial framework designed by IFCA,
2. Continue consultations and technical analysis,
3. Test and implement pilot/demonstration activities with heterogeneous conditions,
4. Conduct capacity building at all levels,
5. Create credible national framework for verifiable emission reduction, and
6. deliver real reductions in GHG emissions.

United Nations Framework Convention on Climate Change (UNFCCC) in its thirteen session (COP-13) in 2007, has agreed on the approach to stimulate actions on Reducing Emissions from Deforestation in Developing Countries (Dec.2.CP. 13). The Decision contains indicative guidance for Demonstration Activities. Policy Approaches and positives incentives on issues relating to reducing emissions from deforestation and forest degradation in developing countries; and the role of conservation, sustainable management of forests and enhancement of forest carbon stocks in developing countries, are also included in the Bali Action Plan (Dec.1/Cp.13).

In the parallel event of COP-13, Indonesia has communicated the concept of phased-approach in implementation of REDD in Indonesia which consists of 3 (three) phases:

- Phase1 (preparation Phase) : Quick analysis on the preparedness of Indonesia, in terms the Status of Science and Technology and relevant policies (2007 -2008)
- Phase 2 (Readiness Phase) : Preparation of methodology and policy framework for REDDI implementation, including capacity buildings and Demonstration Activities (2009-2012)
- Phase 3 (Full Implementation) : Full implementation according to the rules and procedures decided by COP when REDD/REDD-plus has become part of the UNFCCC scheme post 2012.

(See Figure 1).

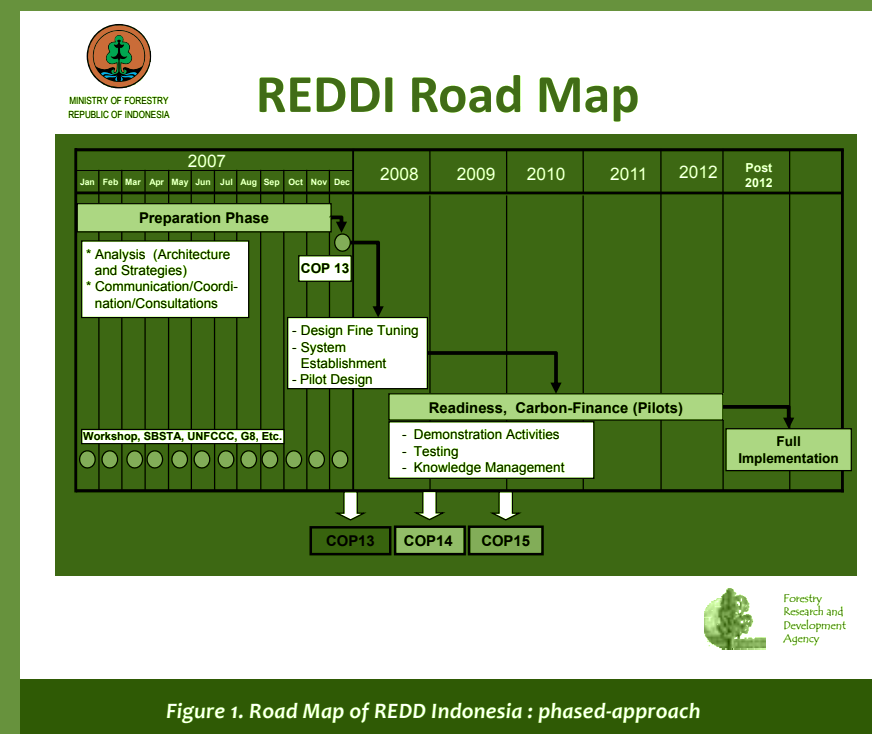


Figure 1. Road Map of REDD Indonesia : phased-approach

In order to follow up the result of the IFCA study in 2007, decision of COP 13, and implementation of REDDI Road Map, a REDDI strategy for Readiness Phase was formulated.

This strategy is aimed at providing guidance concerning policy intervention required in the effort to address drivers of deforestation and forest degradation, and the infrastructures which must be prepared in implementing REDD/REDD plus. This strategy also integrates all actions related to REDD/REDD plus including the activity funded from foreign sources. Readiness strategy includes both methodology and policy aspects, and supporting activities such as capacity building and communications with stakeholders, and implementation of Demonstration Activities.

The Readiness strategy of REDD Indonesia (REDDI) is not only useful in supporting the readiness of Indonesia to implement REDD/REDD-plus under the UNFCCC framework, but also forms a part of the strategy and efforts of Indonesia to achieve Sustainable Management of forest for sustainable development.

## Key Category and Components of REDD-Indonesia Strategy in Readiness Phase

In the second phase (Readiness Phase), Indonesia need to prepare instruments necessary for the implementation of the third phase of REDD/REDDplus (establishment of REL/RL, carbon accounting etc.), MRV System, policy, institutional setting, funding and incentive distribution mechanism, participation of the stakeholders including people in/surrounding the forest (see Figure 2).

REDD Indonesia is implemented in phases, with implementation at the sub-national level (Province/District/Management Unit), and further integrated to the national accounting.

The strategy at the national level is divided into five categories with the following key components :

1. Policy interventions to address drivers of deforestation and forest degradation in different landscapes of forested areas (conservation and protection forests, production forest, plantation forest and oil palm plantation in relation with land use change, peat land),
2. Preparation of REDD regulations (e.g. procedures of REDD implementation and establishment of REDD/REDD-plus Committee).
3. Methodology (establishment of Reference Emissions Level/REL) and development of MRV System (measuring, reporting, verification).
4. Institutional setting (establishment of REDD Committee, national registry, financing including distribution of incentive and accountability, capacity building, stakeholders communications).
5. Relevant analysis (REL/RL, MRV, cost and benefit analysis, impacts, risks);

Meanwhile, at the sub-national (provincial and district) levels, the strategy is divided into four categories with the following key components:

1. Actions to address drivers of deforestation and forest degradation in different landscapes of forested areas (conservation and protection forest, production forest, plantation forest and oil palm plantation in relation with land use change, peat land),
2. Methodology (establishment of Reference Emission Level/Reference Level : REL/RL) and development of MRV System (measuring, reporting, verification) at the provincial/district level.
3. Institutional setting (e.g. establishment of provincial/district REDD/REDD-plus working group, distribution of incentive and accountability, capacity building, stakeholders communication).
4. Development of Demonstration Activities (DA)-REDD which represents various bio-socio-geographical conditions.

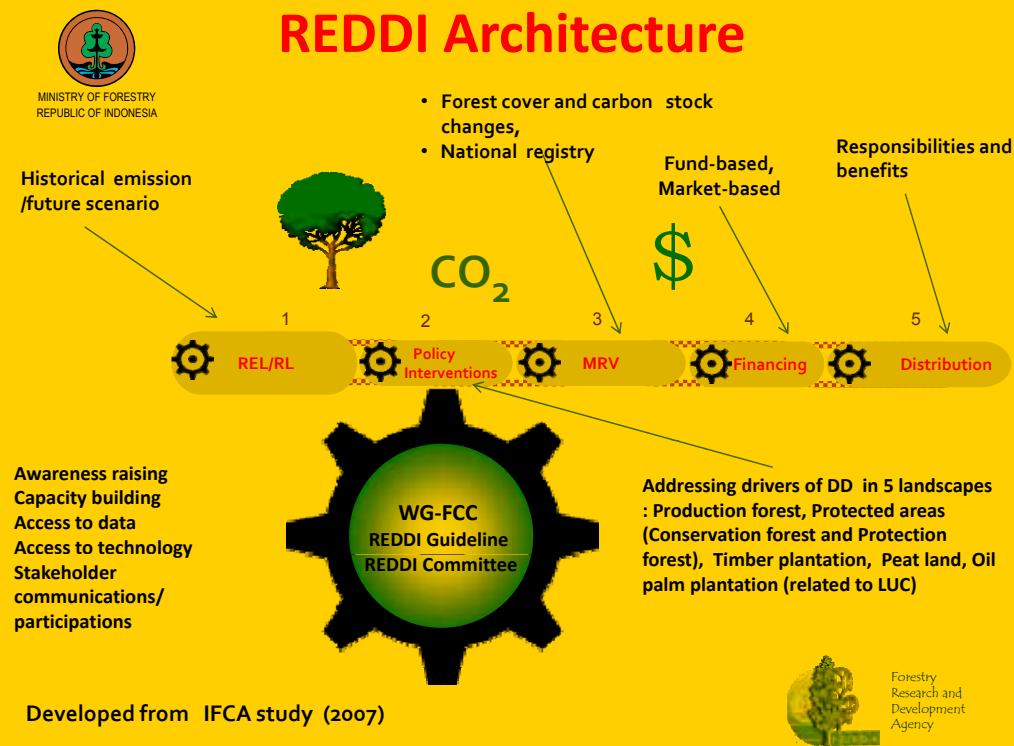


Figure 2. Strategi REDD Indonesia



# READINESS Progress

## National Level

### a. Regulation

As part of the implementation of Readiness Strategy, the Ministry of Forestry issued a regulation on the implementation of REDD demonstration activities (PERMENHUT No. P. 68/Menhut-II/2008) and a Decree on Forestry Working Group on Climate Change/WG-FCC (SK.13/Menhut-II/2009, has been replaced with SK No. 64/Menhut-II/2010), and Regulation on REDD (PERMENHUT No. P30/Menhut-II/2009). The release of Regulation No. P 68/Menhut-II/2008 and P. 30/Menhut-II/2009 was intended to respond to the high interest from both international partners and national stakeholders to participate in -REDD activities, as well as to exercise outcomes of COP/SBSTA processes on REDD. The aim of the implementation of demonstration activities is to test and develop methodologies relating to reduce carbon emission through controlling deforestation and forest degradation.

As the follow up of the release of Regulation No. P30/Menhut-II/2009, WG-FCC has to immediately finalizing draft REDD Committee (National Working Group on REDD) who will be tasked to oversee REDD implementation. The National REDD Working Group (NRWG) will consist of representatives from relevant sectors and stakeholders. As the members of the WG are high level official (Directorate General level), their duties are more dealing with strategic issues. To conduct their duties they will be backed-up and assisted by Technical Team, whose member at more technical level (Director level) and REDD Secretariat.

For the operationalization of the Ministerial Regulation No.P.30/2009, technical guidance for the five Annexes of the Regulation No.P.30/2009 is necessary, and both the NRWG and the FCC-WG facilitate the implementation of REDDI guideline.

### b. Methodology

The two main components of the methodology which must be prepared for the implementation of REDD/REDD-plus is the establishment of REL/RL and development of MRV system. Ministry of Forestry in cooperation with the Government of Australia

has developed Forest Resource Information System (FRIS) and Indonesia National carbon Accounting System (INCAS). INCAS is an integrated system applying all data from Land Use, Land Use Changes and Forestry (LULUCF) or Agriculture, Forestry, and Other Land Use (AFOLU), to obtain the full profile of the Greenhouse Gas (GRK), using remote sensing data, data on land and forest management, land and climate data, and plant growth and biomass data.

The development of INCAS is still in the initial stage, focusing on:

- The processing of remote sensing data to analyze changes on forest cover,
- Research and analysis of change in land use related to changes of biomass and carbon stock,
- Training and technical exchanges between Indonesian and Australia experts,
- Future implementation of scenario analysis on policy related to establishment of REL/RL.

A number of steps need to be done in establishing REL/RL and in building a credible MRV system.

### c. Cross Component

In addition to the progress in the aspect of regulation and methodology as referred to above, there are two initiatives which have cross-cutting aspects, thus requiring intensive synergy and coordination, these are Forest Carbon Partnership Facility (FCPF) and UNREDD. There are several activities under both programmes which support readiness at the national level including activities related to the establishment of REL and development of MRV system.

The FCPF consists of four major components supporting the implementation of REDD Indonesia readiness strategy, namely:

1. Analytical works : (a) Analyze drivers of deforestation from a development perspective, land use and demands, demographic development, (b) Identify priority investments needed to reduce deforestation and forest degradation, and (c) Identify activities within the country that result in reduced emissions and increased removals, and stabilization of forest carbon stocks.
2. Management of Readiness process : (a) Institutional setting and legal framework for REDD implementation, (b) Capacity building of institutions and stakeholders involved in the implementation of REDD activities, (c) Regulatory arrangement for REDD incentives, (d) Awareness Raising, Communication and Outreach, (e) Monitoring of readiness activities including demonstration activities, and (f) Analysis of social and environmental impact of REDD strategies.

3. Facilitate the establishment of REL and development of MRV system : (a) Analysis and possible mapping of nature and effect of land use on terrestrial carbon cycles, (b) Development of a time series analysis of the primary social economic and policy aspects of land use change, and (c) Establishment of PSPs represented various forest types for ground-based forest carbon monitoring.
4. Facilitate development of new demonstration activities in accordance with Indicative guidance for Demonstration Activities under COP-13 decision on REDD (Dec. 2/CP. 13)

Meanwhile the UNREDD program consists of three major components, namely: (a) Improvement of the role of the stakeholders, (b) Facilitation of activities related to establishment of REL and development of MRV system, and (c) development of Demonstration Activities in the district level.

### **Sub-Nasional Level: Demonstration Activities**

The development of Demonstration Activities (DA)– REDD is one of the manifestations of the mandate of the COP-13 decision on REDD. According to the decision 2 of COP-13, developing and developed countries are encouraged to cooperate in the efforts of reducing emissions from deforestation and forest degradation in developing countries, including financial support, capacity building, and transfer of technology from the developed countries.

In addition, DA-REDD may also serve as learning by doing facility and means of building commitment and synergy of stakeholders. Therefore, the development of DA–REDD is an important component in the Readiness Strategy of REDD Indonesia, in which various activities related to methodology, policy, involvement of stakeholders etc are being implemented.

As of now, there are several DA-REDD which have been developed with cooperation between Indonesia and the Government of Australia, Indonesia-ITTO, Indonesia-TNC. Brief description of DA-REDD from the said cooperation is given below:

#### **DA-REDD from the Cooperation between the Governments of Indonesia and Australia in Central Kalimantan**

This DA-REDD is a part of Kalimantan Forest Carbon Partnership (KFCP), which is entirely under the hub of Indonesia-Australia Forest Carbon Partnership (IAFCP).

KFCP is the first DA-REDD in Indonesia and the first DA-REDD on peat land in the world, with the target of gas emission reduction from swamp area of 130.000 ha and other damaged peat land through the improvement of forest management practice, prevention of fire and rehabilitation of peat land hydrology system (Figure 3). KFCP is

also aimed at testing the greenhouse gas measurement methodology on the peat land related to the development of MRV System at the national level, testing of the implementation of REDD incentive mechanism at the sub-national level and building the capacity of local people to allow them to participate in the REDD Scheme.

Lesson learned from the KFCP is expected to be able to contribute in the information dissemination concerning initiatives on REDD and negotiation process under UNFCCC.

#### **DA-REDD from the cooperation between the Government of Indonesia and Germany in East Kalimantan**

This DA-REDD is part of Forests and Climate Change Programme (FORCLIME), which is divided into two phases namely supporting the readiness activity and investment in the implementation of DA in the regency level.

The activities in supporting the Readiness include:

- Facilitation of preparation and implementation process of REDD strategy at the national level and the implementation of DA at the district/unit management level,
- Establishment of REL and development of MRV system at the district level and maintaining the consistency with the implementation of REL and MRV system at the national level,
- Linkage of MRV system with the responsible institutions in land use planning at the district level,
- Facilitation of the development of REDD incentive distribution scheme.

Investment in DA activity:

- Funding of DA-REDD activity in 3 – 4 Districts in Kalimantan, among others in East Kalimantan, with the focus on addressing drivers of deforestation and forest degradation in several forest functions (production forest, protection forest, and conservation forest),

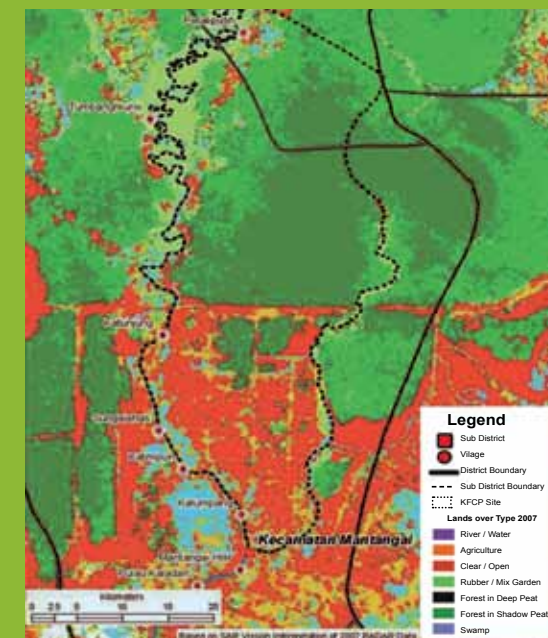


Figure 3. Description of KFCP Location



Figure 4. Participatory mapping



Figure 5. Description of the Use of Land in TNMB

### DA-REDD from the cooperation between the Government of Indonesia and TNC

The cooperation between Indonesia and TNC in Berau District, East Kalimantan, was designed to support the readiness of REDD Indonesia in the district level (sub-national), as an integral part of Readiness at the national level.

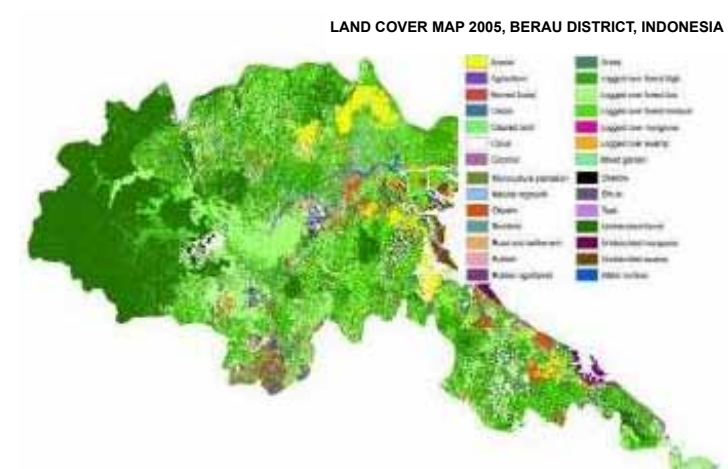


Figure 6. Map of DA-REDD Location in Berau District

- Linkage of DA scheme with the development voluntary carbon market as appropriate.

### DA-REDD from the cooperation between the Government of Indonesia and ITTO

The cooperation between Indonesia and International Tropical Timber Organization (ITTO) in Meru Betiri National Park, East Java, will be undertaken within the 2010–2013 period, which is a cooperation to conserve tropical forest to reduce emission from deforestation and forest degradation, enhance carbon stock, and creating enabling conditions for improving livelihood of local people.

The objective of this project is to reduce emission and maintain the existing stock of carbon and to increase carbon absorption capacity, as well as creating a condition allowing the effort to improve the prosperity of the local people in/surrounding Meru Betiri National Park by involving the people and relevant institutions in the project. The project is expected to deliver six following outcomes:

- Improvement of institutional capacity in resource inventory and carbon accounting in order to deliver measurable, reportable and verifiable emission reduction and carbon stock enhancement according to international standard
- Baseline data and estimation of emission reduction and increase in the carbon stock,
- Development of MRV system of emission reduction and increase in the carbon stock,
- Improvement of the participation of local people in managing forest conservation,
- Development of alternative sources of income to improve the prosperity of the people in/surrounding TNMB,
- Curbing illegal logging and encroachment in TNMB.

In line with the strategy of REDD Indonesia, this cooperation facilitates the three components of strategy for Readiness phase at the district level, namely:

- Methodology for the establishment of REL/RL and development of MRV system at the district Level, and the linkage to the MRV system at the provincial and national level,
- Institution : stakeholders' participation, capacity building, and facilitation in policy formulation,
- Development of Demonstration Activities.

Considering that initiative at the sub-national level is an integral part of the initiative at the national level, collaboration with related stakeholders has commenced since the planning process, starting from:

- National level : Ministry of Forestry, KLH, DNPI, BAPPENAS, Ministry of Finance,
- Provincial Level: Provincial Government, BAPPEDA, Office of Forestry and other relevant institutions,
- District : District Government and other relevant institutions (Planning, Forestry, Agriculture),
- Civil Society : Universities, NGOs, Civil Organizations.
- Donor : AUSAID, Norad, USAID, GTZ, KfW.

In addition to the contribution to the initiative at the national level, the cooperation at the district level is also expected to contribute to the negotiation process under UNFCCC.

NATIONAL STRATEGY

# REDD - INDONESIA

READINESS PHASE 2009 – 2012  
and progress in implementation



Website : [www.dephut.go.id](http://www.dephut.go.id); [www.forda-mof.org](http://www.forda-mof.org)

**Contact Information:**

1. Centre for Social Economy and Policy Research, FORDA,  
[forestpolicy@puslitsosekhut.web.id](mailto:forestpolicy@puslitsosekhut.web.id)
2. Indonesia Forest Climate Alliance (IFCA)  
[ifca2010@yahoo.co.id](mailto:ifca2010@yahoo.co.id)
3. Forest and Climate Change Working Group, Ministry of Forestry  
[perubahan.iklimhut@gmail.com](mailto:perubahan.iklimhut@gmail.com)